



archoncad
by
Jonathan
Pickup

How To Save A Corrupt File

Archoncad

Thank you for downloading this document. These tips and tricks are provided free of charge but the copyright still belongs to Archoncad and Jonathan Pickup. You may use these notes for your own use, or you can use them to help run a VectorWorks User group, but you must not pretend that the notes belong to anyone other than me.

I have been operating since 1996 with the aim of providing CAD support to the Construction Industry. The main part of our business is now the training and support of VectorWorks. Before I ran a training and support company in England, mainly for MiniCad and MicroStation.

I am the author of several VectorWorks manuals. For more information about these manuals please refer to <http://www.archoncad.co.nz>

Trademarks & Copyright

Trademarks

VectorWorks - VectorWorks is a registered trademark and VectorWorks and SmartCursor are trademarks of Diehl Graphsoft Inc. All other brand names, product names or trademark belong to their respective holders.

Copyright

This material is protected by copyright.

No part of this document may be reproduced or transmitted in any form or by any means, electronic or mechanical, for any purpose, without the express written permission of Architecture on CAD Ltd., its affiliates or the authors.

Disclaimer

While every effort has been taken to ensure the accuracy of this document, it is presented "as is". Architecture on CAD Ltd, its' affiliates and the authors assume no responsibility of liability for errors or omissions.

Jonathan Pickup
Phone : +64 21 743 470
Fax : +64 6 843 7760
Email : jon@archoncad.co.nz

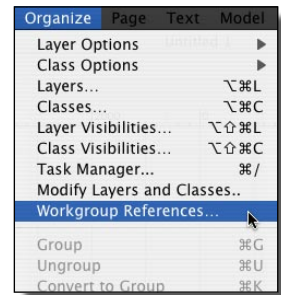
How to save a Corrupt File (maybe)

This trick doesn't always work, but it is a last hope solution. If you can get most of you drawing using this method, you may only have to redraw a small amount.

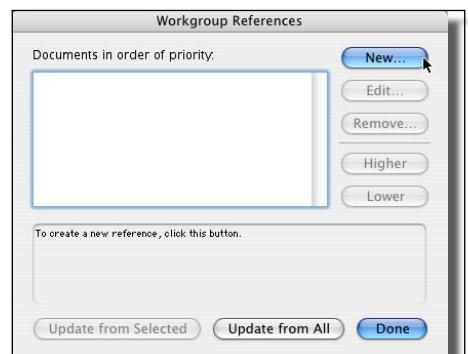
There is one trick that I have given out a few times lately where the file is corrupt or crashing frequently. Remember that this works sometimes, it doesn't always work. If it can work then it is a life saver. I have sometimes used it to access a file that is so corrupt that it won't open.

This trick uses WorkGroup Referencing. Refer to the VectorWorks Architect Manual, or the VectorWorks Landmark manual (also covered in the archoncad manual Setting up Large Projects available at <http://www.archoncad.co.nz>).

- Leave the corrupt file closed and open a new file.
- From the Menu Bar chose **Organise > Workgroup References...**



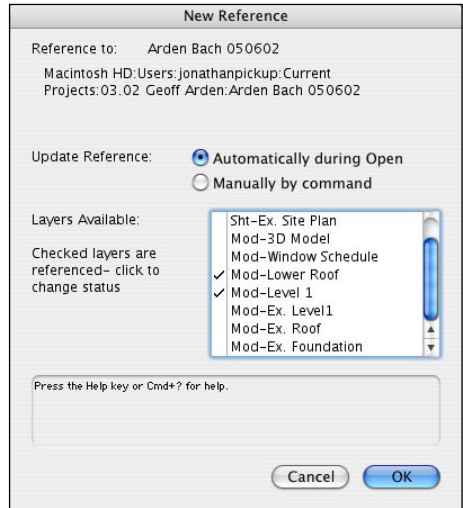
- We have to add the file that is corrupt, click on the **New** button.



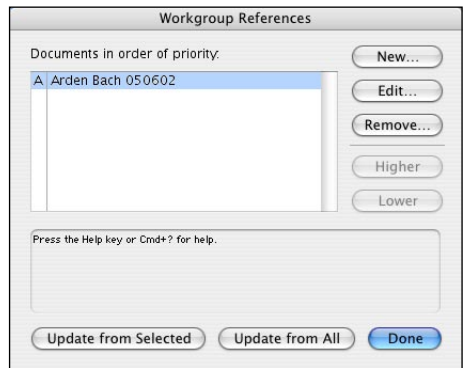
- Find the file on your computer. Then click on the Open button.



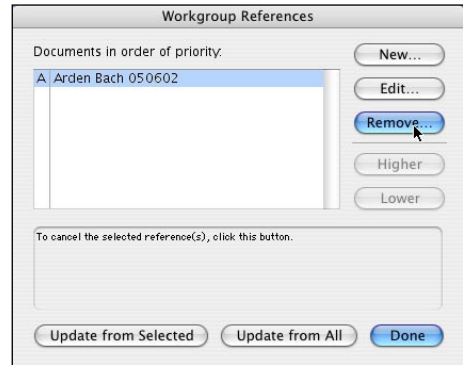
- The New Reference dialog box gives you control over which layers to attach to the current file.
- Select all the layers that you want, but do not select any layers that have layer links on them, layer links can not be imported.
- Then click on the **OK** button.



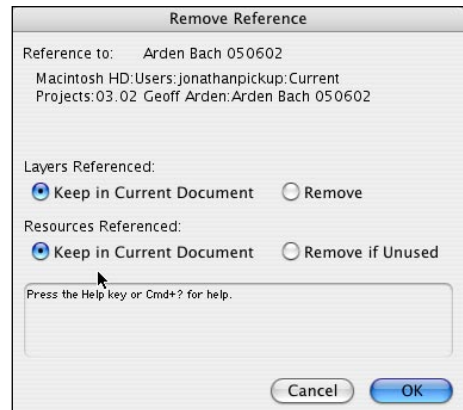
- So far this is just the same as the manual. Now for the trick.



- Remove the Workgroup Reference. This will break the link to the corrupt file.



- You get a dialog box asking you what to do with all the resources that you have referenced into the current file. Choose to keep them all and they will all stay in the current file, imported from the corrupt file.



- The Workgroup References dialog box is empty. No files are currently linked, but the layers that you choose from the corrupt file remain in your file, and all the information on the imported layers comes in as well.

